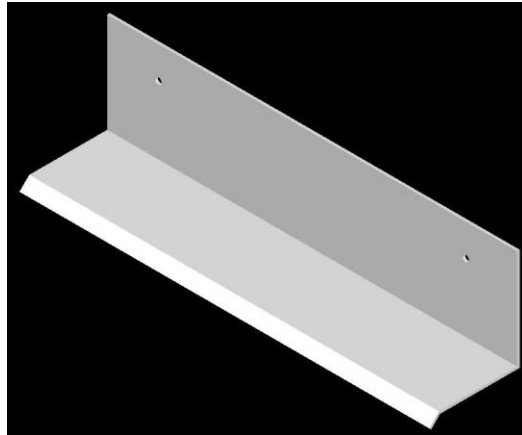




**“Specialists in Metal and Vinyl Building Products”**

## **NILES VINLY WINDOW/DOOR DRIP EDGE**



<b>WIDTH</b>	<b>ATTACHMENT FLANGE</b>	<b>PIECES/CARTON</b>	<b>CARTONS/PALLET</b>
1"	2"	75	25
1 1/2"	2"	60	25
2"	2"	50	25

\*STANDARD LENGTH 10'

Niles Vinyl Window/Door Drip Edge is used above window and door openings to allow moisture to travel down the surface and not enter into the framing. They shall be used where specified by the design authority and installed per industry standards.

### **MEETS OR EXCEEDS THE FOLLOWING SPECIFICATIONS:**

- ASTM D4216* - Standard Specification for Rigid Poly(Vinyl Chloride) (PVC) and Related PVC and Chlorinated Poly(Vinyl Chloride) (CPVC) Building Products Compounds.
- ASTM 1784* - Standard Specification for Rigid Poly(Vinyl Chloride) (PVC) Compounds and Chlorinated Poly(Vinyl Chloride) (CPVC) Compounds.
- ASTM C1063* - Standard specification for installation of lathing and furring for Portland cement-based plaster.
- ASTM C1861* - Standard Specification for Lathing and Furring Accessories, and Fasteners, for Interior and Exterior Portland Cement-Based Plaster.

## **NILES BUILDING PRODUCTS CO.**

### **Company Headquarters**

1600 Hunter Street

Niles, Oh 44446

Phone: 800-323-3329

Fax: 330-544-8868 [www.nilesbldg.com](http://www.nilesbldg.com)