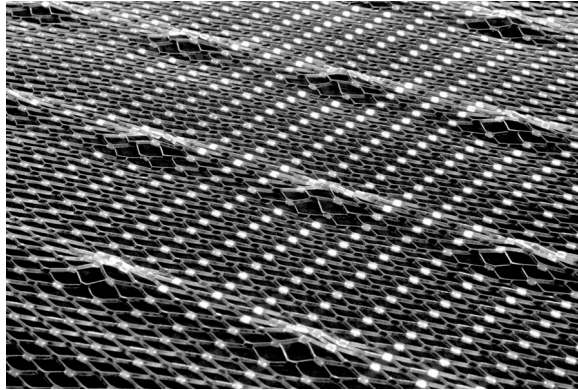




“Specialists in Expanded Metal Building Products”

SELF-FURRED DIAMOND MESH LATH SPECIFICATION



Wt. Per Sq. Yd.	Sheet Size	Pcs. / Bdl	Yds. / Pallet
1.75 lbs.	27" x 97"	10	500
2.50 lbs.	27" x 97"	10	500
3.40 lbs.	27" x 97"	10	500

25 bundles per pallet

Niles's Self-Furred Diamond Metal Lath provides a 1/4" indentation in the metal lath to hold away from the sheathing base and reinforcement (plaster embedment) for all types of walls and fireproofing of steel beam and columns. Provides ample keying for scratch coat and is commonly used for plaster machine application. This lath is produced with ASTM A653 standard specification for steel sheet, zinc-coated (galvanized) or zinc-iron alloy coated (galvannealed) by hot-dip process.

ASTM C841 Standard specification for installation of interior lathing and furring
ASTM C847 Standard specification for Metal Lath (2.5 and 3.4 only)

NILES BUILDING PRODUCTS CO.

Company Headquarters
1600 Hunter Street
Niles, Oh 44446
Phone: 800-323-3329
Fax: 330-544-8868

www.nilesbldg.com