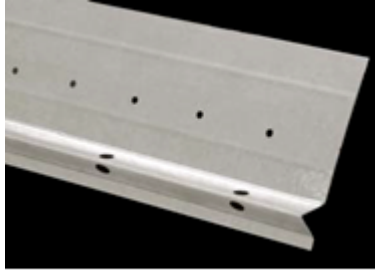




“Specialists in Expanded Metal Building Products”

Niles Stainless Steel #7 Foundation Weep Screed



Minimum Decimal Thickness	Stainless Steel Types	Length	Pieces/ Carton
.017	304 or 316	10'	25

Niles Stainless Steel #7 Foundation Weep Screed is used to provide a weep mechanism as part of the drainage system as required at the bottom of all framed walls; by all major building codes and the International Building Code in ASTM C1063. The larger holes in the ground flange are bonding holes as the entire surface of the sloped ground provides for drainage once the stucco has hydrated and shrinkage has occurred. The 3-1/2" nailing flange serves as a flashing when water resistant, breathable building paper or paper backed lath is installed over the flange.

Niles Stainless Steel #7 Foundation Weep Screed is produced to meet **ASTM C1063**, with the notable exception that the metal is comprised of stainless steel, and not galvanized carbon steel. It is offered in Stainless Steel types 304 or 316.

Standard ground sizes are 1/2" and 3/4". Note: Additional ground sizes are available on a special order basis.

Niles Stainless Steel #7 Foundation Weep Screed is manufactured from Stainless Steel produced to **ASTM A240** standards.

Niles Stainless Steel #7 Foundation Weep Screed can be used instead of standard metal #7 Foundation Weep Screed, in the same manner as detailed in **ASTM C1063**.

Please note the following requirements and cautions:

Materials that come in contact with Niles Stainless Steel #7 Foundation Weep Screed shall be either stainless steel or vinyl in order to avoid galvanic corrosion that occurs when dissimilar metals touch.

Fasteners: Stainless Steel Fasteners are recommended for attachment of Niles Stainless Steel #7 Foundation Weep Screed. Should standard galvanized fasteners be used, then to prevent standard galvanized fasteners from coming in contact with the Niles Stainless #7 Foundation Weep Screed, they are to be separated by washers made of plastic, neoprene or some other inert material. Consult with fastener manufacturer as to fastener recommendations.

Continuous Application: Provide isolation of standard galvanized Lath and Accessories from Stainless Steel Lath and Accessories if used in a continuous application.

NILES BUILDING PRODUCTS CO.

1600 Hunter Street, Niles, OH 44446 Phone: 800-323-3329 Fax: 330-544-8868 www.nilesbldg.com